

# the forum

Nov. 11 - 24, 2015 Vol. XXVII, Issue VI

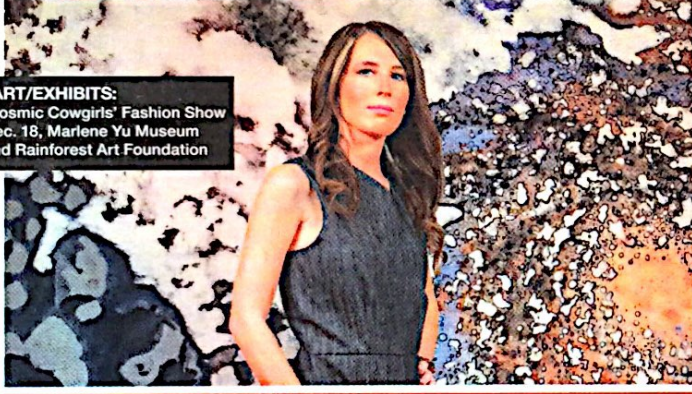


## TALK of the TOWN



**MUSIC/COMEDY:**  
Def Leppard  
Feb. 10, CenturyLink Center

**ART/EXHIBITS:**  
"Cosmic Cowgirls" Fashion Show  
Dec. 18, Marlene Yu Museum  
and Rainforest Art Foundation



### ENTERTAINMENT/FUN/THEATER/DANCE/MUSIC/CASINOS

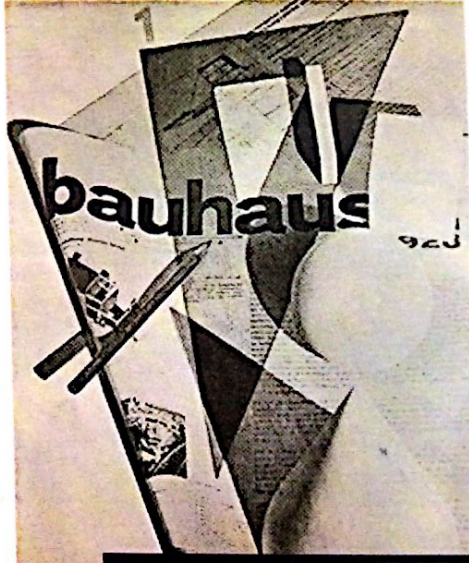
**ART/EXHIBITS**  
**NOV. 18 - JAN. 8: "RECYCLED SCULPTURES" BY JOHN NORWOOD.** This New York City artist will show his work for the first time at the Rainforest Art Foundation in Louisiana. The exhibit opens, from 5 to 6:30 p.m. Nov. 18 with a Museum Member dinner at 7 p.m. at the Rainforest Foundation, located at 710 Travis Street, Shreveport. Admission is free with a suggested \$10 donation. Complimentary hors d'oeuvres and wine will be served. The opening will also feature the 2014-15 Kids Can exhibit "Oceans of Adaptation" featuring the recycled bottle fish created by children and volunteers in the community at various events throughout the year.  
**THROUGH NOV. 28: ART BY SARAH JOY LEWIS.** The Bossier Arts Council is excited to present the artworks of Sarah Joy Lewis in the Emerging Artists Gallery. Gallery hours are 11 a.m. to 5 p.m. Tuesday through Saturday.  
**THROUGH NOV. 28: SHREVEPORT PASTEL SOCIETY.** The Bossier Arts Council's East Bank Gallery welcomes the artists of the Shreveport Pastel Society. Go to [www.bossierarts.org](http://www.bossierarts.org). Gallery hours are 11 a.m. to 5 p.m. Tuesday through Saturday.  
**THROUGH NOV. 29: EYEWITNESS TO HISTORY: THE CIVIL WAR.** Visit the R.W. Norton Art Gallery rare and antiquarian collection for books that tell first hand accounts of the Civil War.  
**THROUGH NOV. 29: KENT ULLBERG: "A RETROSPECTIVE."** The show displays 50 of Kent Ullberg's works from his more than 250 smaller pieces along with five large scale photographs of some of his monument at R.W. Norton Art Gallery.  
**THROUGH NOV. 30: JULIE CREWS EXHIBIT.** Oil paintings from artist Julie Crews are on display on the Gallery Wall at Agora Borealis. Julie Crews is an oil painter who's work gives the viewer an intimate glimpse into her personal life, exposing the delicacy of monotony and repetition regarding domestic life.  
**DEC. 12: HEART THE ART BIZARRE STREET PARTY.** The Bossier Arts Council and Flying Heart Brewery present this fun event to include live music, food trucks, art vendors, activities, and an outdoor movie from 11 a.m. to 6 p.m. on Barksdale Blvd. in front of BAC and Flying Heart Brewery.  
**DEC. 18: "COSMIC COWGIRLS" FASHION SHOW.** Ann Chandler of "Ann Collections" created this show that will feature her designs and a brand new Marlene Tseng Yu inspired dresses and selection from the Coia Bella Boutique. Seating will begin promptly at 7:30 p.m. at Marlene Yu Museum and Rainforest Art Foundation, located at 710 Travis St., Shreveport. Tickets are \$10 and available now. Come dressed in your best Western attire. For tickets or more information, call 717-9111.  
**THROUGH-DEC. 19: "FROM FLOWERS TO FORM:**

**ART INSPIRED BY MATHEMATICS,"** by Harnet Stone. Evans illuminates the mathematical elements in art. Experience the power of geometry and algebra as art forms through the interactive artworks. The artspace interactive exhibition has been presented at the Museum of Science in Boston and the Louisiana Children's Museum in New Orleans. Tours will be led by Evans and professional leading area artists from Nov. 9-Dec. 17.  
**THROUGH JAN. 31: BAUHAUS INSPIRED DESIGN EXHIBIT.** The Meadows Museum of Art at Genentech College will host "Supposed to Be the New World: Bauhaus Books, Bauhaus People, Bauhaus Culture in America 1925-1955".  
**THROUGH JAN. 31: "SKETCHES FROM THE TRENCHES: JEAN DESPUJOLS IN WORLD WAR I."** The Meadows Museum's new exhibition offers exclusive insight to a French soldier's experience. On loan from the Despujols family, these drawings have never before been displayed. The exhibition features loans from the National World War I Museum and Memorial, and the R. W. Norton Art Gallery.  
**FIRST SATURDAY OF THE MONTH: SHREVEPORT WRITERS CLUB.** Writers from all stages of life in all genres and styles of writing meet to share their thoughts in written form with other people who love words, guests welcome. Free. 10 a.m. to noon. Bossier Arts Council Annex, 630 Barksdale Blvd., Bossier City.

**BARS/NIGHTLIFE**  
**2 JOHNS STEAK & SEAFOOD:** 2151 Airline Drive, Bossier City, 841-5646. 5 to 10 p.m. Tuesday through Thursday, 6 to 11 p.m. Friday and Saturday. Drew Ley, Tuesdays and Fridays, Winston Hall, Wednesdays, Winston Hall & Chris Allen "Jazz Night" Thursdays.  
**BABY HUEY'S ON THE BAYOU:** 1709 Shigo Road, Bossier City, 752-9465. You Can Be a Star Karaoke, 9 p.m. to 2 a.m. Fridays.  
**BEARS ON FAIRFIELD:** 1401 Fairfield Ave., Shreveport 272-1643. Tickets available at Ticketweb.com.  
**SUPERIOR'S STEAKHOUSE:** 855 Perrement Road No. 120, Shreveport 219-4123. 6 to 10 p.m. Kenny Bill Stinson on Wednesdays and Fridays; Haley Brooke on Thursdays; Nathaniel Hooten on Saturdays.  
**THE BRASS MONKEY** 3104 Youree Drive, Shreveport. 754-4231. Shows start at 9 p.m.  
**THE OFFICE:** 1303 Shreveport-Barksdale Hwy., Shreveport. 216-3346. Happy hour every day 11 a.m. to 7 p.m. Featuring \$2 domestics, \$2.50 imports and \$6 Patron and Jameson.  
**THE STAGE AT SILVER STAR:** Live entertainment. Gates open at 7 p.m. unless stated otherwise. 1201 Dixie Overland Road, Bossier City. Call 752-3633.  
**TIKI BAR:** 639 E. Kings Hwy., Shreveport. 868-6355.  
**TREJOS MEXICAN RESTAURANT:** 5795 N. Market, Shreveport. 929-0299. Wayne's FM Karaoke, 6 to 10 p.m. Fridays.

**CHICAGO/THE HOOKAH ROOM:** 118 Texas St. Shreveport. 221-0490. Acts are 10 p.m. to 6 a.m. unless otherwise stated. Loco lounge featuring the best selection of electronic dance music artists in town. Fridays, Floyd Grigsby and the 56K Band, Saturdays.  
**COVE ON CROSS LAKE:** 1612 Dilg League Drive (off Lakeshore), Shreveport 635-0262. 11:30 a.m. to close Monday through Saturday.  
**EL PORTRILLO MEXICAN RESTAURANT:** 6614 Youree Drive, Shreveport. Wayne's FM Karaoke, 6 to 10 p.m. Tuesdays.  
**FROG'S BREATH SALOON:** 1984 Airline Drive, Bossier City. You Can Be a Star Karaoke, 9 p.m. to 1 a.m. Wednesday through Saturday.  
**FLYING HEART BREWING:** located at 700 Barksdale Blvd. in Bossier City and housed in a historic building that was once home to Bossier City's Fire House No. 6. The tasting room is open each Friday and Saturday from 4 to 9 p.m., and tours are available at 3:30 p.m. Tours cost \$5 and include a pint at the end of the tour. Guests must be 21 or older.  
**GREAT RAFT BREWING:** located at 1251 Dalzell, Shreveport. Open every Thursday and Friday from 4 to 9 p.m. and Saturday from noon to 9 p.m. Free tours are available at 1 p.m., 2 p.m. and 3 p.m. Saturdays.  
**H&H LOUNGE:** 717 Hope St. Shreveport. 424-9297. Good Vibes Night every Wednesday. Drum Circle, 6 to 9 p.m., VJ-DJ music, 9 p.m. to midnight.  
**HANGAR 21:** 616 Commerce St. Shreveport. 221-0064. Shows start at 10 p.m. unless otherwise stated.  
**LEE'S:** 639 E. Kings Hwy., Shreveport. 861-2151. Acts are 8 p.m. to midnight weekdays, 9 p.m. Fridays and 9:30 p.m. Saturdays. Jerry Beach Blues Jam every Monday night. Funhouse, Nov. 13; Kandu, Nov. 14, 21, 27; Get Lucky, Nov. 6; Rex Goliath, Nov. 20.  
**MUDDY WATERS SPORTS BAR:** 5000 Benton Road, Bossier City. 741-7635.  
**NICKY'S MEXICAN RESTAURANT:** 1400 Airline Drive, Bossier City. 6 to 10 p.m., Thursdays, Wayne's FM Karaoke.  
**NOBLE SAVAGE:** 417 Texas St. Shreveport. 221-1781. Open 5 p.m. to 2 a.m. Dirty Redd's Jam Session featuring area artists playing all around good music every Thursday from 8 p.m. to midnight.  
**Christian Simeon,** 8 to 10 p.m., Nov. 11; Ziffel Brothers with Sister Collie, 9 to 11 p.m., Nov. 13; Dragstrip Phantoms, 10 p.m. to 1 a.m., Nov. 14; Mike Westbrook, 8 to 10 p.m., Nov. 17; Pam Harrington, 8 to 10 p.m., Nov. 18; Marty Christian, 9 to 11 p.m., Nov. 20; Pocket Change, 10 p.m. to 1 a.m., Nov. 21; Amelia Blake Garner, 8 to 10 p.m., Nov. 24; Bryan Zimmerman, 8 to 10 p.m., Nov. 25; Bryan Cathy 9 to 11 p.m., Nov. 27; Easy Money, 10 p.m. to 1 a.m., Nov. 28.  
**RISORANTE GIUSEPPE:** 4800 Line Ave., Shreveport. 869-4548. Jazziana, 7 p.m. every Friday and Saturday.  
**SHREVEPORT HOUSE CONCERT SERIES:** 1508 Fairfield Ave., Shreveport. 670-3567. Shows begin at 7 p.m.; Mark Stuart, Nov. 22; Wild Ponies, Jan. 17; Dayna Kurtz, March 19; Rebecca Loebe, May 1. Go to [shreveporthouseconcerts.org/](http://shreveporthouseconcerts.org/).  
**STRANGE BREW:** 235 Wall St., Shreveport.  
**SUPERIOR GRILL:** 6123 Line Ave., Shreveport. 869-3243. Live music.  
**WHAT'S ON TAP:** 1207 Shreveport-Barksdale Hwy., Shreveport 869-2422. Happy Hour daily 7 a.m. to 7 p.m. Showing college football on 15 different TVs and 33 beers on tap.  
**WHAT'S ON TAP II:** 2369 Airline Drive Bossier City. 747-5505. Happy Hour daily 11 a.m. to 7 p.m. Serving food and showing college football on 18 different TVs and 23 beers on tap.

**MUSIC/COMEDY**  
**NOV. 21: SSO RISING STARS: MENDELSSOHN VIOLIN CONCERTO.** Welcome 22-year-old William Hagen (third prize winner of the 2015 Queen Elisabeth International Music Competition the highest-ranking American since 1980) to the stage for the sublime violin concerto by Mendelssohn. The concert opens with a unique work by Hagen featuring SSO principal musicians and includes Beethoven's sunny Symphony No. 8. The concert begins at 7:30 p.m. at RiverView Theater with Michael Buttermann as the conductor. Free Concert Conversation starts at 6:40 p.m. Free shuttle service starts at 6:30 p.m. Shuttle picks up at Regions Bank parking garage at the corner of Milam and Market streets. To purchase tickets, go to [www.shreveportsymphony.com](http://www.shreveportsymphony.com).  
**EVERY SUNDAY THROUGH NOV. 22: WERNICK METHOD BLUEGRASS JAM WORKSHOP.** Singer/songwriter Amelia Blake will teach a six-week "slow jam" bluegrass workshop, using the Wernick Method. Pete Wernick, of the renowned band HotRize, is known as "Dr. Banjo" in bluegrass circles. Believing that anyone can learn to play and sing, he pioneered a method of teaching new musicians and "closet pickers" to jam. All bluegrass instruments, all skill levels are welcome. Ability to play just a few chords is all that's required. The workshop will be 2:30 to 6 p.m. and the workshop will be held at 516 Texas Street in downtown Shreveport. Go to [bigjam.com](http://bigjam.com), or email [AmeliaBlake@amelialake.com](mailto:AmeliaBlake@amelialake.com).  
**DEC. 1: THE GUITAR EVENT OF THE YEAR-JOE BONAMASSA.** Tickets range from \$69 to \$99 and doors open at 7 p.m.; show starts at 8 p.m. at the Shreveport Municipal Auditorium. Tickets can be purchased by calling the Shreveport Municipal Memorial Auditorium Box Office 10 a.m. to 4 p.m. Monday through Friday at 841-4196, any Ticketmaster location, or online at [ticketmaster.com](http://ticketmaster.com).  
**FEB. 10: DEF LEPPARD.** Def Leppard's influential career includes numerous hit singles and ground-breaking multi-



**ART/EXHIBITS:**  
Bauhaus Inspired Design Exhibit  
Through Jan. 31, Meadows Museum

WANT TO GET YOUR EVENT, BAND OR BAR/NIGHTCLUB LISTED IN "TALK OF THE TOWN"? EMAIL [forum@shreveport.com](mailto:forum@shreveport.com) OR CALL 752-3633

Scanned by CamScanner